

# GOLD SILANE SILICONE SILKY MATT PAINT



Interior  
Wall



## Application Recommendations

### Application Areas

• It is Decorative interior Topcoat Paint; acrylic emulsion based, excellent scrub and It has superior cover power, resistant for mildew and algae. Harmless to the environment, odorless and silky matt texture.

### Equipment



### Equipment



### Surface Preparation



• Gold Acrylic Exterior Undercoat applicable cleaned every dirt, oil, dry and solid of the swollen layers. Can obtain maximum benefit from the Gold Silan, must be removed from accordance mortar, raw concrete, cement, gypsum board and made ceiling paint, dirt, dust and adhesion surfaces. Should be cleaned worm, swollen, completely perforated plate of paints.

• Unless there is a purpose to the new paint coarse grained mortar, concrete, surface must be smoothed with fillers such as cement board.

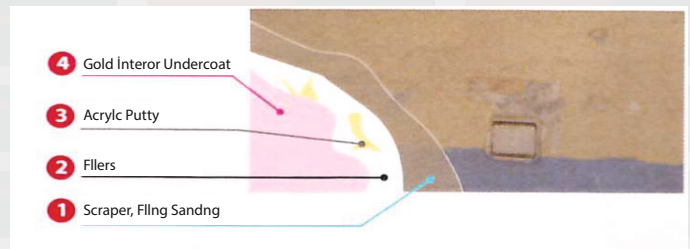
• If necessary, the surface cracks should be filled with acrylic putty, defects to be remedied.

• The best way to ensure the entire surface is shiny satiny touch will be applied after smoothing Gold Silan and primer will reduce consumption to ensure good adhesion of the paint as well.

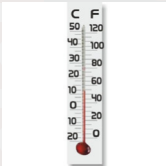
• Application will be made and old plastic or synthetic paint, glass textiles, wallpaper and so on. coated surfaces, adhesion of dust, dirt and must be degreased, cleaned and completely dry old and

swollen layer should be made sound and clean.

• Old painted moldy surfaces before application on the surface should be cleaned with damp cloth. Thoroughly with emery paper, the surface must be removed. If soot and mold drying preemptive 2-3 coats should be applied.



### Application



During application and during the subsequent 24 hours at the ambient temperature of the surface should be +5 C.



Before application Gold Silan should be mixed.



Gold Silan thinned with clean water 10% and application for two layer by brush, roller or spray.



Should be waited minimum 6 hours between layers.

### After Application

Application tools should be washed with water after use immediately.

# GOLD SILANE SILICONE SILKY MATT PAINT



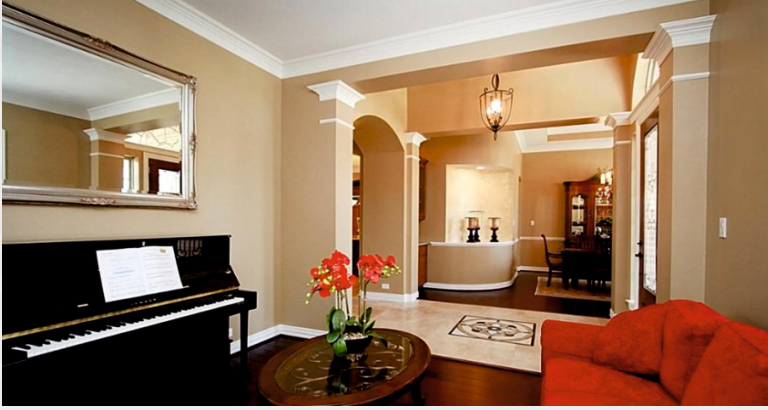
Interior

Water

Product Code: 42

## Product Description

- ◆ High tensile strength and his special silk matt paint has a maximum deletion feature allows an optimum texture. silky matte texture with evokes a feeling of spaciousness in an environment reflecting light. High coverage. Integrates with the surface it is applied. With the spread of power during application provides labor savings. Disturbing because it is water-based and has no odor and is environmentally friendly.



## Application Areas

- ◆ It is Decorative interior topcoat paint; acrylic emulsion based, excellent scrub and it has superior cover power, resistant for mildew and algae, harmless to the environment, odorless and silky matt texture.
- ◆ In interior, prepared in accordance surfaces such as; mortar, concrete, cement, boards, gypsum panel
- ◆ Old painted surfaces
- ◆ Over wallpaper, putty and glass textile

## Advantages

- ◆ It is easily cleaned and excellent scrub with doped silicon.
- ◆ It has superior cover power.
- ◆ Inside the resulting moisture allows the building to breathe with out throwing ability.
- ◆ Showing resistance to mold and fungus; provides relief especially for asthmatics.
- ◆ It is gives special shine, smooth silk, delivers excellent light.
- ◆ Does not harm health of environment and not smell because solvent free and diluted with water.
- ◆ It is gives satin smooth and excellent glossy.



Matt



Brush



Roll



Spray Pistle

## Technical specifications:

### Structure

- ◆ Acrylic emulsion based, water based

### Diluting

- ◆ Water

### Appearance on the packing

- ◆ Dark, Stable, Jelly

### Dry Appearance

- ◆ Semi Matt, Pastel, Smooth

### Color

- ◆ In stock white. Custom manufacturing for any orders.

### Water. Vapor permeability

- ◆ SD (m) (TS EN ISO 7783-2) Approximately 0,250

### Drying Time

- ◆ Drying time 6 hours for 2 layer. Full dry 24 hours. Lower temperature and higher relative humidity will lengthen drying time.

### Coverage

- ◆ Depending on the surface smoothness and absorbency approximately 17-21 m<sup>2</sup>/lt. per a layer.



### Shelf Life

- ◆ In package and in 5-35 °C 2 years

### Packing

- ◆ 20 - 10 and 3,5kg plastic bucket.

### Safety Recommendations

- ◆ S2: Keep out the reach of children.
- ◆ S24/25: Avoid contact with eyes and skin.
- ◆ S26: In case of contact with eyes immediately wash with water and contact with a doctor.
- ◆ S28: In case of contact with skin immediately wash with water.
- ◆ S29: Do not discharge into drains or water courses.
- ◆ S46: If swallowed, seek medical advice immediately and show the container or label. Mix before using. Close the cover after using. Protect from frost and direct sunlight.

### Quality Certificate

- ◆ TSE TS 5808  
Public exposure No. 04.524/604.506/E3